



Amsterdam

# Greening school playgrounds in Amsterdam

Amsterdam Impulse School playgrounds (AIS)

Erik Disch  
E.Disch@amsterdam.nl  
Projectmanager AIS  
Project Management Department

28 mei 2018





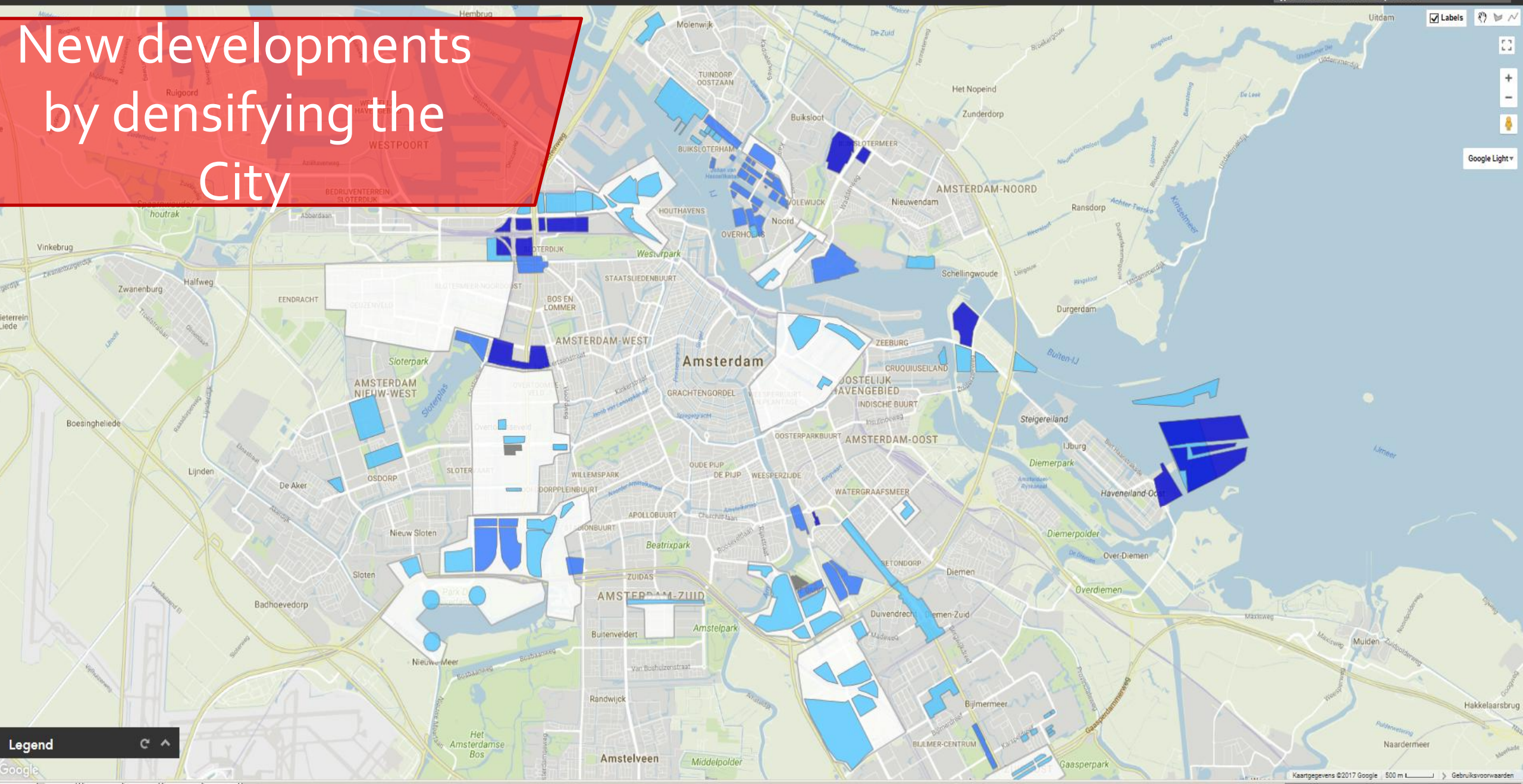


Amsterdam is facing  
a big challenge





# New developments by densifying the City







# Greening school playgrounds in Amsterdam



How can we make the most of the increasingly limited opportunities for green infrastructure in Amsterdam?



Amsterdam  
Impulse School  
playgrounds  
(AIS)



Ensure schoolyards  
once again become  
real playgrounds





We offer

- Grant for 70 playgrounds
- €70.000,- grant per playground
- Guidance in application

# (Re)Design School playgrounds

Starting points



Green



Rain-proof



Educational



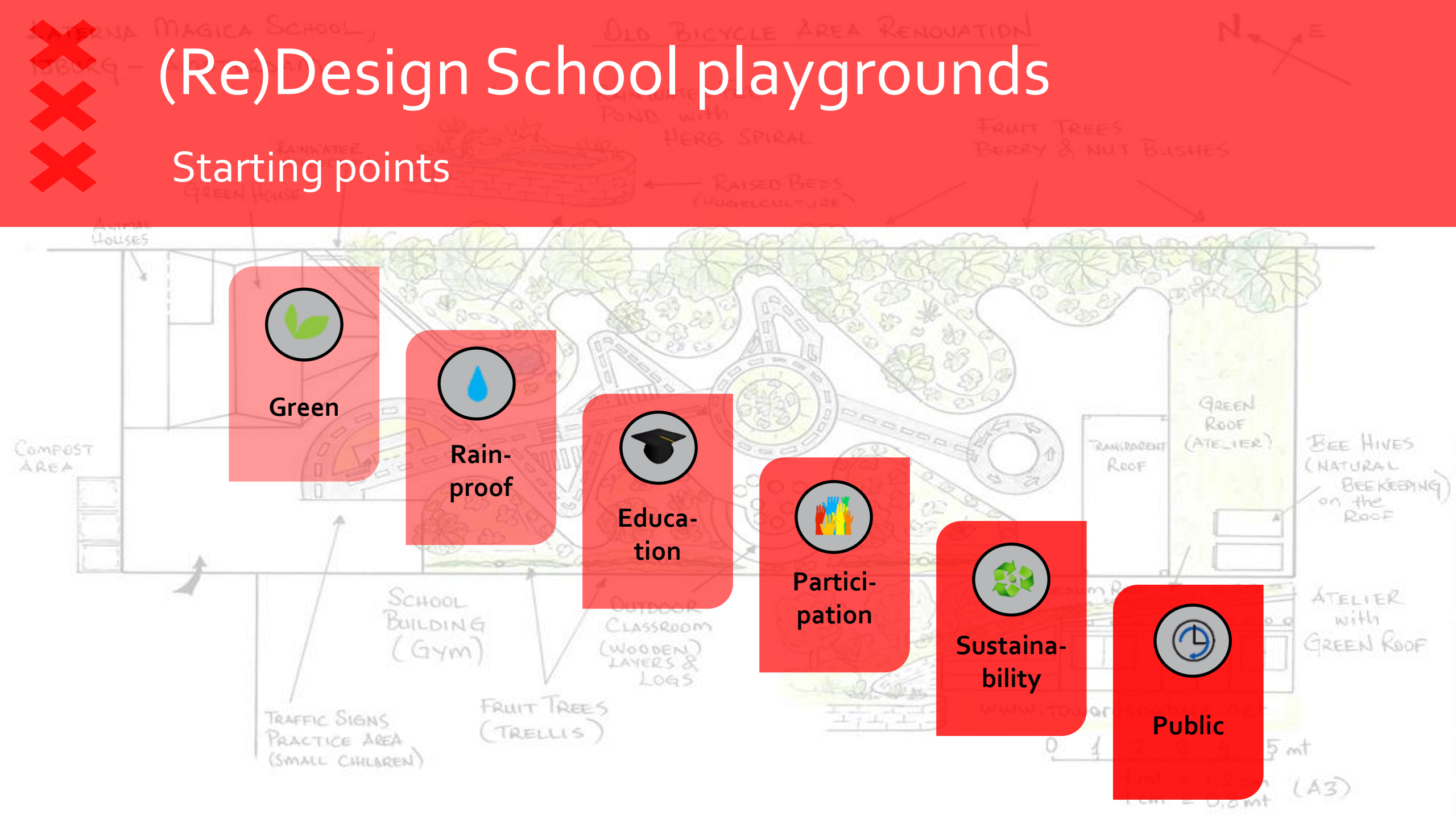
Participation



Sustainability



Public







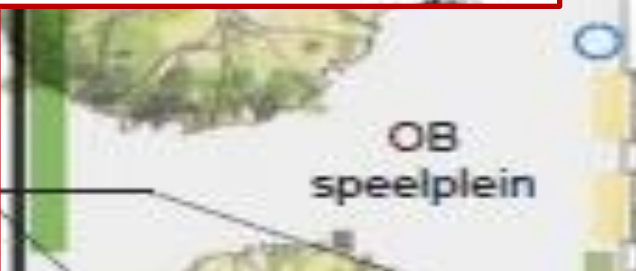
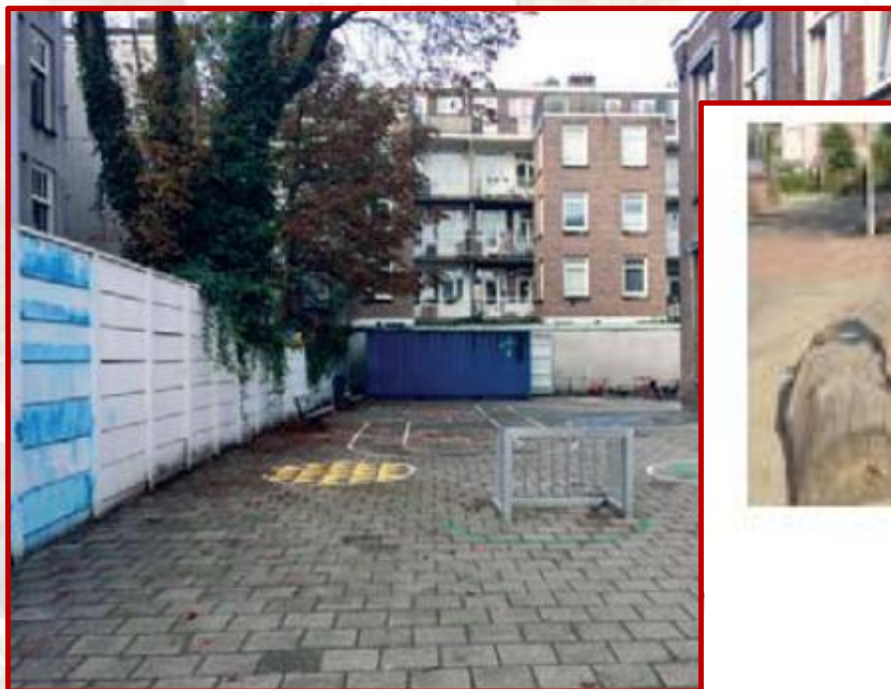
Traditional school  
playgrounds...







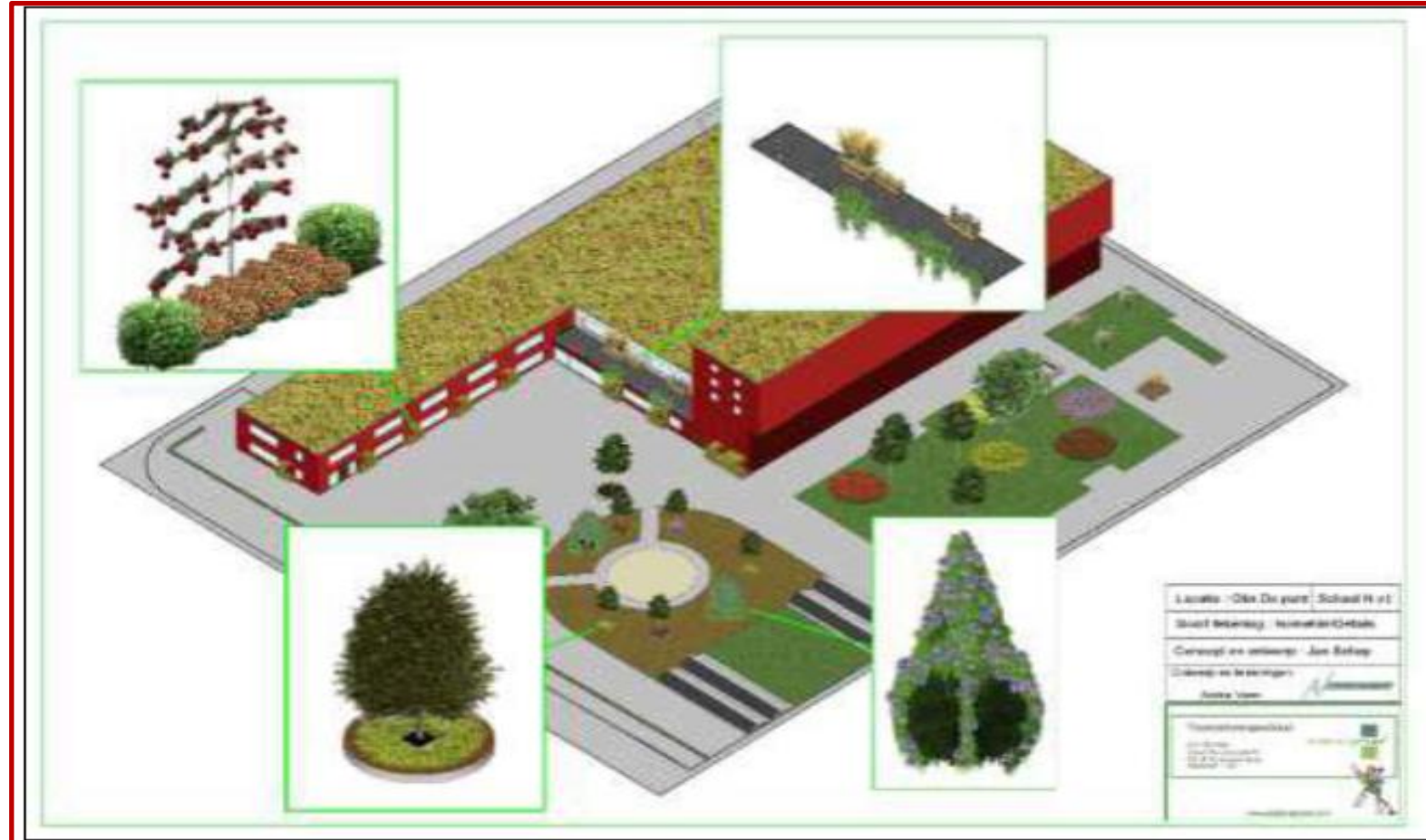
# Example 1: Annie M.G. Schmidtschool







## Example 2: De Punt





# XXX Example 3: Koetsveldtschool





# XXX Trends

Green to:

- learn from
- play with
- eat

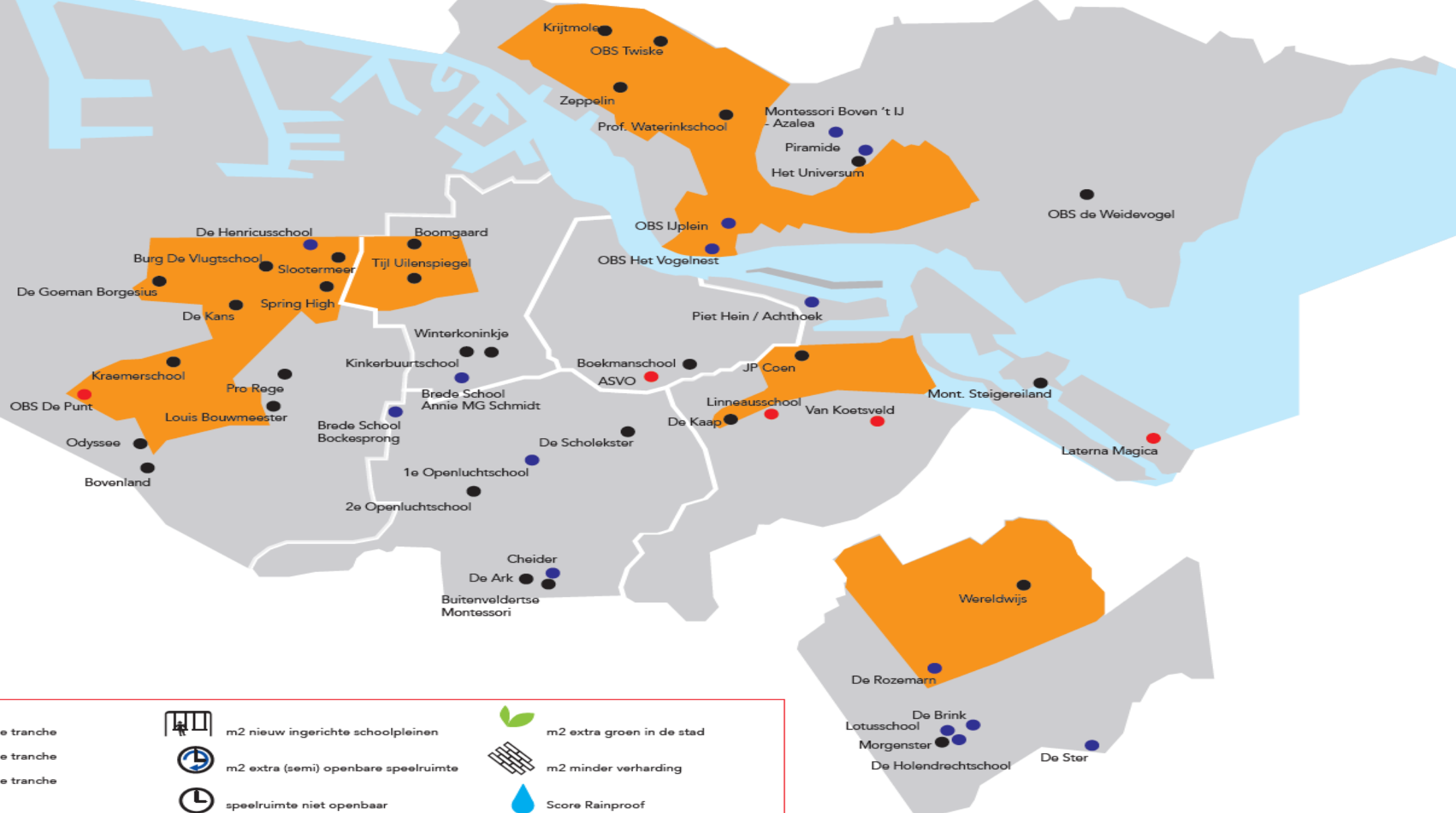






# Overzichtskaart Amsterdamse Impuls Schoolpleinen

december 2017



## Legenda\*

- scholen 1e tranche
- scholen 2e tranche
- scholen 3e tranche



Focusbuurt AAGG 2016



m2 nieuw ingerichte schoolpleinen



m2 extra (semi) openbare speelruimte



speelruimte niet openbaar



m2 extra groen in de stad



m2 minder verharding



Score Rainproof



aanvraag door Bestuurscommissie

\* Uitgebreide toelichting symbolen in de documenten 'Resultaten AIS en toelichting'.



# Results so far (1)



**77.000 m<sup>2</sup>** green, attractive and safe playgrounds established with AIS



**30.840 m<sup>2</sup>** extra (semi) public playgrounds



**19.200 m<sup>2</sup>** extra green space added to the city



**20.240 m<sup>2</sup>** less pavement in the city



**50** non-smoking playgrounds





## Results so far (2)

✓ Appreciated by schools, children, local communities and politicians

! Maintenance



# Effects

- Playfully challenged to move (overweight)
- Pedagogical climate (bullying)
- Different zones occur collisions (safety)





# Upcoming milestones

Subsidy for 20 redesigned schoolyards in 2018

Assessment of health impacts of the greening of school playgrounds in PERFECT

Needs assessments of schools for the extension of AIS.

Political decision: completion or continuation

**PERFECT**  
Interreg Europe



European Union  
European Regional  
Development Fund





# Questions / contact?

Erik Disch

[E.Disch@amsterdam.nl](mailto:E.Disch@amsterdam.nl)

Project Management Department

